

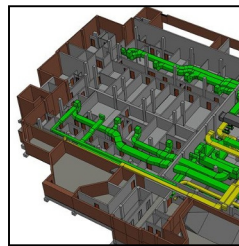
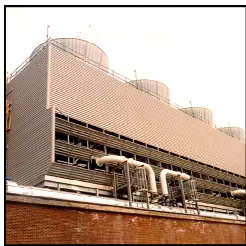
▶ February 4, 2011  
1:30 PM to 8:00 PM

▶ RMF Engineering, Inc.  
Corporate Offices  
1st Floor Training RM  
5520 Research Park Dr  
Baltimore MD, 21228

(Research Park is  
Located Next to UMBC)

# Career Fair

RMF Engineering, Inc. will be conducting a job fair for technical professionals interested in a career in consulting engineering. RMF is a one hundred eighty person consulting firm specializing in building and infrastructure systems engineering, utility master planning, civil/structural engineering, and project commissioning. The firm has offices in Baltimore-Maryland, Durham-North Carolina, Charlottesville-Virginia, Mt. Pleasant-South Carolina, Boston-Massachusetts, Albany-New York, and Columbus-Ohio.



Visit  
[www.rmfi.com](http://www.rmfi.com)  
for additional  
details  
regarding the  
job fair

## The firm is seeking entry level and experienced professionals:

### Electrical Engineers

- Building System Electrical Design
- Medium Voltage Power Distribution (5 kV To 35 kV)
- Substation Design
- Emergency Power Systems
- Power System Analysis (SKM)

### Commissioning Professionals

- Mechanical and Electrical Building System Commissioning
- Building Automation Systems
- Utility Plant Commissioning
- Testing and Balancing of Mechanical Systems

### Mechanical Engineers

- HVAC System Design
- Plumbing System Design
- Central Heating and Cooling Plant System Design
- Utility Master Planning

### Designers and CAD Technicians

- Mechanical (HVAC and Plumbing)
- Piping Design
- Electrical
- Civil /Structural

### Civil / Structural Engineers

- Underground Utility Distribution
- Sanitary and Storm Water System Design
- Site Design
- Structural Building Design and Analysis

